

<http://www.oblible.com>

424B2 1 d421065d424b2.htm PROSPECTUS SUPPLEMENT - PPL CAPITAL FUNDING, INC.

[Table of Contents](#)

**Filed Pursuant to Rule 424(b)(2)  
File Nos. 333-180410 and 333-180410-06**

Filed pursuant to Rule 424(b)(2). Based upon the registration of \$400 million of Senior Notes to be offered by means of this prospectus supplement and the accompanying prospectus under the registration statement filed March 28, 2012, a filing fee of \$54,560 has been calculated in accordance with Rule 457(r). This fee has been previously transmitted to the SEC. This paragraph shall be deemed to update the Calculation of Registration Fee table in the registration statement referred to in the second sentence above.

**PROSPECTUS SUPPLEMENT  
(To Prospectus dated March 28, 2012)**

**\$400,000,000**



**PPL Capital Funding, Inc.**

**3.50% Senior Notes due 2022  
Fully and Unconditionally Guaranteed as to Payment of Principal,  
Premium, if any, and Interest by**

**PPL Corporation**

PPL Capital Funding, Inc. (“PPL Capital Funding”) is offering its 3.50% Senior Notes due 2022 (the “Notes”). Interest on the Notes will be payable semi-annually on June 1 and December 1 of each year, commencing on June 1, 2013, and at maturity, as further described in this prospectus supplement. The Notes will mature on December 1, 2022, unless redeemed on an earlier date. We may, at our option, redeem the Notes, in whole at any time or in part from time to time, at the redemption prices described in this prospectus supplement under the heading “Description of the Notes—Redemption.”

The Notes will be issued in registered form and available for purchase in the authorized denominations of \$2,000 and integral multiples of \$1,000 in excess thereof.

PPL Capital Funding’s parent, PPL Corporation, will fully and unconditionally guarantee (the “Guarantees”) PPL Capital Funding’s obligations to pay principal, premium, if any, and interest on the Notes.

**Investing in the Notes involves certain risks. See “[Risk Factors](#)” on page S-6 of this prospectus supplement and page 4 of the accompanying prospectus.**

**These securities have not been approved or disapproved by the Securities and Exchange Commission or any state securities commission, nor has the Securities and Exchange Commission or any state securities commission determined that this prospectus supplement or the accompanying prospectus is accurate or complete. Any representation to the contrary is a criminal offense.**

	<u>Price to Public(1)</u>	<u>Underwriting Discount</u>	<u>Proceeds, Before Expenses, to Us(1)</u>
Per Note	99.843%	0.650%	99.193%
Total	\$399,372,000	\$2,600,000	\$396,772,000

(1) Plus accrued interest, if any, from the date of issuance, which is expected to be on or about October 15, 2012.

The underwriters expect to deliver the Notes to the purchasers in book-entry form only through the facilities of The Depository Trust Company on or about October 15, 2012.

**<http://www.oblible.com>**

*Joint Book-Running Managers*

**Mitsubishi UFJ Securities**

**Morgan Stanley**

**RBC Capital Markets**

**Wells Fargo Securities**

*Co-Managers*

**Deutsche Bank Securities**

**Lloyds Securities**

**SMBC Nikko**

**SunTrust Robinson Humphrey**

The date of this prospectus supplement is October 10, 2012.

[Table of Contents](#)

We have not, and the underwriters have not, authorized anyone to provide any information other than that contained in or incorporated by reference into this prospectus supplement, the accompanying prospectus or any free writing prospectus prepared by or on behalf of us or to which we have referred you. We and the underwriters take no responsibility for, and can provide no assurance as to the reliability of, any other information that others may give you. We are not making an offer of these securities in any jurisdiction where the offer is not permitted. You should assume that the information contained in or incorporated by reference into this prospectus supplement, the accompanying prospectus or any free writing prospectus prepared by or on behalf of us or to which we have referred you is accurate only as of the respective date of such document. Our business, financial condition, results of operations and prospects may have changed since those dates.

## TABLE OF CONTENTS

---

	<u>Page</u>
<b>PROSPECTUS SUPPLEMENT</b>	
<a href="#">ABOUT THIS PROSPECTUS SUPPLEMENT</a>	S-1
<a href="#">WHERE YOU CAN FIND MORE INFORMATION</a>	S-2
<a href="#">SUMMARY</a>	S-4
<a href="#">RISK FACTORS</a>	S-6
<a href="#">USE OF PROCEEDS</a>	S-7
<a href="#">CONSOLIDATED CAPITALIZATION OF PPL CORPORATION AND SUBSIDIARIES</a>	S-8
<a href="#">DESCRIPTION OF THE NOTES</a>	S-9
<a href="#">UNDERWRITING</a>	S-20
<a href="#">VALIDITY OF THE NOTES AND THE GUARANTEES</a>	S-23
<b>PROSPECTUS</b>	
<a href="#">ABOUT THIS PROSPECTUS</a>	3
<a href="#">RISK FACTORS</a>	4
<a href="#">FORWARD-LOOKING INFORMATION</a>	5
<a href="#">PPL CORPORATION</a>	7
<a href="#">PPL CAPITAL FUNDING, INC.</a>	8
<a href="#">PPL ENERGY SUPPLY, LLC</a>	8
<a href="#">PPL ELECTRIC UTILITIES CORPORATION</a>	9
<a href="#">LG&amp;E AND KU ENERGY LLC</a>	9
<a href="#">LOUISVILLE GAS AND ELECTRIC COMPANY</a>	9
<a href="#">KENTUCKY UTILITIES COMPANY</a>	9
<a href="#">USE OF PROCEEDS</a>	10
<a href="#">RATIOS OF EARNINGS TO FIXED CHARGES AND EARNINGS TO COMBINED FIXED CHARGES AND PREFERRED STOCK DIVIDENDS</a>	11
<a href="#">WHERE YOU CAN FIND MORE INFORMATION</a>	13
<a href="#">EXPERTS</a>	15
<a href="#">VALIDITY OF THE SECURITIES AND THE PPL GUARANTEES</a>	16

As used in this prospectus supplement, the terms “we,” “our” and “us” may, depending on the context, refer to PPL Capital Funding, or to PPL Capital Funding together with PPL Corporation.

---

[Table of Contents](#)

### **ABOUT THIS PROSPECTUS SUPPLEMENT**

This prospectus supplement is part of a registration statement that PPL Capital Funding and PPL Corporation have filed with the Securities and Exchange Commission (the “SEC”) utilizing a “shelf” registration process. Under this shelf process, we are offering to sell the Notes, using this prospectus supplement and the accompanying prospectus. This prospectus supplement describes the specific terms of this offering. The accompanying prospectus and the information incorporated by reference therein describe our business and give more general information, some of which may not apply to this offering. Generally, when we refer only to the “prospectus,” we are referring to both parts combined. You should read this prospectus supplement together with the accompanying prospectus and the information incorporated by reference herein and therein before making a decision to invest in the Notes. If the information in this prospectus supplement or the information incorporated by reference into this prospectus supplement is inconsistent with the accompanying prospectus, the information in this prospectus supplement or the information incorporated by reference into this prospectus supplement will apply and will supersede that information in the accompanying prospectus.

Certain affiliates of PPL Capital Funding and PPL Corporation, specifically PPL Energy Supply, LLC, PPL Electric Utilities Corporation, LG&E and KU Energy LLC, Louisville Gas and Electric Company and Kentucky Utilities Company, have also registered their securities on the “shelf” registration statement referred to above. However, the Notes are solely obligations of PPL Capital Funding and, to the extent of the Guarantees, PPL Corporation, and not of any of PPL Corporation’s other subsidiaries. None of PPL Energy Supply, LLC, PPL Electric Utilities Corporation, LG&E and KU Energy LLC, Louisville Gas and Electric Company or Kentucky Utilities Company or any of PPL Corporation’s other subsidiaries will guarantee or provide any credit support for the Notes.

[Table of Contents](#)**WHERE YOU CAN FIND MORE INFORMATION****Available Information**

PPL Corporation files reports and other information with the SEC. You may obtain copies of this information by mail from the Public Reference Room of the SEC, 100 F Street, N.E., Room 1580, Washington, D.C. 20549, at prescribed rates. Further information on the operation of the SEC's Public Reference Room in Washington, D.C. can be obtained by calling the SEC at 1-800-SEC-0330.

PPL Corporation maintains an Internet Web site at [www.pplweb.com](http://www.pplweb.com). On the Investor Center page of that Web site, PPL Corporation provides access to its SEC filings free of charge, as soon as reasonably practicable after filing with the SEC. The information at PPL Corporation's Web site is not incorporated into this prospectus supplement by reference, and you should not consider it a part of this prospectus supplement. PPL Corporation's filings are also available at the SEC's Web site ([www.sec.gov](http://www.sec.gov)).

**Incorporation by Reference**

PPL Corporation will "incorporate by reference" information into this prospectus supplement by disclosing important information to you by referring you to another document that it files separately with the SEC. The information incorporated by reference is deemed to be part of this prospectus supplement, and later information that we file with the SEC prior to completion of this offering will automatically update and supersede that information. This prospectus supplement incorporates by reference the documents set forth below that have been previously filed with the SEC. These documents contain important information about PPL Corporation.

<b>SEC Filings</b>	<b>Period/Date</b>
Annual Report on Form 10-K	Year ended December 31, 2011
Quarterly Reports on Form 10-Q	Quarters ended March 31, 2012 and June 30, 2012 (as amended)
Current Reports on Form 8-K	Filed on January 18, 2012, January 31, 2012, February 1, 2012, February 27, 2012 (solely with respect to Item 1.01), February 29, 2012, March 27, 2012, March 28, 2012, March 29, 2012, April 13, 2012, April 16, 2012, April 19, 2012 (two separate Form 8-K filings), April 26, 2012, May 21, 2012, June 8, 2012 (three separate Form 8-K filings), June 14, 2012, July 12, 2012, August 24, 2012, September 20, 2012 (solely with respect to Item 8.01) and October 5, 2012 (solely with respect to Item 8.01).
PPL Corporation's 2012 Notice of Annual Meeting and Proxy Statement	Filed on April 3, 2012 (portions thereof incorporated by reference into PPL Corporation's Annual Report on Form 10-K)

Additional documents that PPL Corporation files with the SEC pursuant to Section 13(a), 13(c), 14 or 15(d) of the Securities Exchange Act of 1934, as amended, between the date of this prospectus supplement and the termination of the offering of the Notes are also incorporated herein by reference. Unless specifically stated to the contrary, none of the information that we disclose under Item 2.02 or 7.01 of any Current Report on Form 8-K that we have furnished or may from time to time furnish with the SEC is or will be incorporated by reference into, or otherwise included in, this prospectus supplement.

---

**Table of Contents**

PPL Corporation will provide without charge to each person to whom a copy of this prospectus supplement has been delivered a copy of any and all of its filings with the SEC. You may request a copy of these filings by writing or telephoning PPL Corporation at:

Two North Ninth Street  
Allentown, Pennsylvania 18101-1179  
Attention: Investor Services Department  
Telephone: 1-800-345-3085

We have not included or incorporated by reference any separate financial statements of PPL Capital Funding herein. We do not consider those financial statements to be material to holders of the Notes because (1) PPL Capital Funding is a wholly-owned subsidiary that was formed for the primary purpose of providing financing for PPL Corporation and its subsidiaries, (2) PPL Capital Funding does not currently engage in any independent operations, (3) PPL Capital Funding does not currently plan to engage, in the future, in more than minimal independent operations and (4) PPL Capital Funding's parent, PPL Corporation, will fully and unconditionally guarantee PPL Capital Funding's obligations to pay principal, premium, if any, and interest on the Notes. See "PPL Capital Funding" in the accompanying prospectus.

[Table of Contents](#)**SUMMARY**

*The following summary contains information about the offering by PPL Capital Funding of its Notes. It does not contain all of the information that may be important to you in making a decision to purchase the Notes. For a more complete understanding of PPL Capital Funding, PPL Corporation and the offering of the Notes and the Guarantees, we urge you to read carefully this entire prospectus supplement, the accompanying prospectus and the documents incorporated by reference herein, including the “Risk Factors” sections and our financial statements and the notes to those statements.*

**PPL Corporation**

PPL Corporation, headquartered in Allentown, PA, is an energy and utility holding company that was incorporated in 1994. Through its subsidiaries, PPL Corporation owns or controls nearly 19,000 megawatts (“MW”) of generating capacity in the United States, sells energy in key U.S. markets and delivers electricity and natural gas to approximately 10.5 million customers in the United States and the United Kingdom.

**The Offering**

<b>Issuer</b>	PPL Capital Funding, Inc.
<b>Guarantor</b>	PPL Corporation
<b>Securities Offered</b>	\$400,000,000 aggregate principal amount of PPL Capital Funding’s 3.50% Senior Notes due 2022.
<b>Stated Maturity Date</b>	December 1, 2022
<b>Interest Payment Dates</b>	Interest on the Notes will be payable semi-annually on June 1 and December 1 of each year, commencing on June 1, 2013, and at maturity, or upon earlier redemption.
<b>Interest Rate</b>	3.50% per annum
<b>Redemption</b>	<p>We may, at our option, redeem the Notes, in whole at any time or in part from time to time.</p> <p>If we redeem the Notes before September 1, 2022 (the date that is three months prior to the stated maturity of the Notes (the “Stated Maturity Date”)), the Notes will be redeemed by us at a redemption price equal to the greater of:</p> <ul style="list-style-type: none"> <li>(1) 100% of the principal amount of the Notes to be so redeemed; and</li> <li>(2) the sum of the present values of the remaining scheduled payments of principal and interest on the Notes to be so redeemed (not including any portion of such payments of interest accrued to the date of redemption) discounted to the date of redemption on a semi-annual basis (assuming a 360-day year consisting of twelve 30-day months) at the Adjusted Treasury Rate (as defined in this prospectus supplement), plus 30 basis points;</li> </ul>

[Table of Contents](#)

	<p>plus, in either of the above cases, accrued and unpaid interest on the principal amount being redeemed to, but not including, the date of redemption.</p> <p>If we redeem the Notes on or after September 1, 2022, the Notes will be redeemed by us at a redemption price equal to 100% of the principal amount of the Notes to be so redeemed, plus accrued and unpaid interest on the principal amount being redeemed to, but not including, the date of redemption. See “Description of the Notes—Redemption.”</p>
<b>Ranking, Guarantees</b>	<p>The Notes will be PPL Capital Funding’s unsecured and unsubordinated obligations and will rank equally in right of payment with PPL Capital Funding’s existing unsecured and unsubordinated indebtedness and senior in right of payment to PPL Capital Funding’s subordinated indebtedness. The Notes will be fully and unconditionally guaranteed by PPL Corporation as to payment of principal, premium, if any, and interest. The Guarantees will be PPL Corporation’s unsecured obligations and will rank equally in right of payment with PPL Corporation’s other unsecured and unsubordinated indebtedness. However, because PPL Corporation is a holding company, its obligations under the Guarantees will be effectively subordinated to existing and future liabilities of its subsidiaries. See “Risk Factors.”</p>
<b>Form and Denomination</b>	<p>The Notes will be initially issued in the form of one or more global securities, without coupons, in denominations of \$2,000 and integral multiples of \$1,000 in excess thereof, and deposited with the Trustee on behalf of The Depository Trust Company (“DTC”), as depository, and registered in the name of DTC or its nominee. See “Description of the Notes—General” and “Description of the Notes—Book-Entry Only Issuance—The Depository Trust Company.”</p>
<b>Use of Proceeds</b>	<p>We expect the net proceeds from the sale of the Notes to be invested in or loaned to subsidiaries of PPL Corporation, which will use the funds to repay short-term debt obligations, including commercial paper borrowings, and for general corporate purposes. See “Use of Proceeds.”</p>
<b>Reopening of the Series</b>	<p>We may, without the consent of the Holders of the Notes, increase the principal amount of the series and issue additional notes of such series having the same ranking, interest rate, maturity and other terms as the Notes, other than the date of issuance and, in some circumstances, the initial interest accrual date and the initial interest payment date, if applicable. Any such additional notes may, together with the Notes, constitute a single series of securities under the Indenture. See “Description of the Notes—General.”</p>
<b>Governing Law</b>	<p>The Notes and the Indenture are governed by the laws of the State of New York, except to the extent the Trust Indenture Act shall be applicable.</p>



---

[Table of Contents](#)

## **RISK FACTORS**

*Before making a decision to invest in the Notes, you should carefully consider the following risk factors, as well as the other information included in this prospectus supplement, the accompanying prospectus and the documents incorporated by reference into this prospectus supplement and the accompanying prospectus.*

### **Risks Relating to PPL Corporation's Businesses**

See the risk factors set forth beginning on page 21 of PPL Corporation's Annual Report on Form 10-K for the year ended December 31, 2011 for a discussion of certain risks relating to PPL Corporation's businesses.

### **Risks Relating to the Notes**

***PPL Corporation's cash flow and ability to meet its obligations with respect to its Guarantees of the Notes largely depend on the performance of its subsidiaries. As a result, PPL Corporation's obligations with respect to its Guarantees of the Notes will be effectively subordinated to all existing and future liabilities of its subsidiaries.***

PPL Corporation is a holding company and conducts its operations primarily through subsidiaries. Substantially all of its consolidated assets are held by such subsidiaries. Accordingly, its cash flow and its ability to meet its obligations under its Guarantees of the Notes are largely dependent upon the earnings of these subsidiaries and the distribution or other payment of such earnings to it in the form of dividends, loans or advances or repayment of loans and advances from it. The subsidiaries are separate and distinct legal entities and have no obligation to pay any amounts due on the Notes or to make any funds available for such payment.

Because PPL Corporation is a holding company, its obligations with respect to the Notes will be effectively subordinated to all existing and future liabilities of its subsidiaries. Therefore, its rights and the rights of its creditors, including rights of a holder of any Note, to participate in the assets of any subsidiary in the event that such a subsidiary is liquidated or reorganized will be subject to the prior claims of such subsidiary's creditors. To the extent that PPL Corporation may be a creditor with recognized claims against any such subsidiary, its claims would still be effectively subordinated to any security interest in, or mortgages or other liens on, the assets of the subsidiary and would be subordinated to any indebtedness or other liabilities of the subsidiary senior to that held by it. Although certain agreements to which PPL Corporation's subsidiaries are parties limit the ability to incur additional indebtedness, PPL Corporation and its subsidiaries retain the ability to incur substantial additional indebtedness and other liabilities.

The debt agreements of some of PPL Corporation's subsidiaries contain provisions that might restrict their ability to pay dividends, make distributions or otherwise transfer funds to PPL Corporation upon failing to meet certain financial tests or other conditions prior to the payment of other obligations, including operating expenses, debt service and reserves. PPL Corporation currently believes that all of its subsidiaries are in compliance with such tests and conditions. Further, if PPL Corporation elects to receive distributions of earnings from its foreign operations, PPL Corporation may incur United States taxes, net of any available foreign tax credits, on such amounts. Distributions to PPL Corporation from its international projects are, in some countries, also subject to withholding taxes.

***An active trading market for the Notes may not develop.***

The Notes are a new issue of securities with no established trading market. We cannot assure that an active trading market for the Notes will develop. There can be no assurances as to the liquidity of any market that may develop for the Notes, the ability of holders to sell their Notes or the price at which the holders will be able to sell their Notes. Future trading prices of the Notes will depend on many factors including, among other things, prevailing interest rates, our operating results and the market for similar securities.

---

[Table of Contents](#)**USE OF PROCEEDS**

We expect the net proceeds of this offering to be approximately \$396.0 million, after the payment of the underwriting discount and our estimated offering expenses. We expect the net proceeds from the sale of the Notes to be invested in or loaned to subsidiaries of PPL Corporation, which will use the funds to repay short-term debt obligations, including commercial paper borrowings, and for general corporate purposes.

S-7

[Table of Contents](#)**CONSOLIDATED CAPITALIZATION OF PPL CORPORATION AND SUBSIDIARIES**

The following table sets forth the historical unaudited consolidated capitalization of PPL Corporation and its consolidated subsidiaries as of June 30, 2012:

- on an actual basis; and
- on an as adjusted basis to give effect to the issuance of the Notes in this offering as described herein.

This table should be read in conjunction with the consolidated financial statements of PPL Corporation and its consolidated subsidiaries, the notes related thereto and the financial and operating data incorporated by reference into this prospectus supplement and the accompanying prospectus.

	<b>As of June 30, 2012</b>	
	<b>Actual</b>	<b>As Adjusted</b>
	<b>(In millions)</b>	
Long-term debt <sup>(1)</sup>	\$ 18,698	\$ 18,698
Notes offered hereby	—	400
Total long-term debt	18,698	19,098
Noncontrolling interests	18	18
Shareowners' common equity	10,962	10,962
Total equity	10,980	10,980
Total capitalization	\$ 29,678	\$ 30,078

<sup>(1)</sup> Long-term debt excludes \$12 million of long-term debt due within one year as of June 30, 2012.

---

**Table of Contents****DESCRIPTION OF THE NOTES**

The following summary description sets forth certain terms and provisions of the Notes that we are offering by this prospectus supplement. Because this description is a summary, it does not describe every aspect of the Notes or the Indenture under which the Notes will be issued, as described below. The Indenture is filed as an exhibit to the registration statement of which the accompanying prospectus is a part. The Indenture and its associated documents contain the full legal text of the matters described in this section. This summary is subject to and qualified in its entirety by reference to all of the provisions of the Notes and the Indenture, including definitions of certain terms used in the Indenture. We also include references in parentheses to certain sections of the Indenture. Whenever we refer to particular sections or defined terms of the Indenture in this prospectus supplement, such sections or defined terms are incorporated by reference herein. The Indenture has been qualified under the Trust Indenture Act, and you should refer to the Trust Indenture Act for provisions that apply to the Notes.

**General**

PPL Capital Funding will issue the Notes as a series of debt securities under an Indenture, dated as of November 1, 1997 (as such indenture has been and may be amended and supplemented from time to time, the “Indenture”), among PPL Capital Funding, PPL Corporation and The Bank of New York Mellon (as successor to JPMorgan Chase Bank, N.A. (formerly known as The Chase Manhattan Bank)), as trustee (the “Trustee”). We may issue an unlimited amount of Notes or other securities under the Indenture. The Notes and all other debt securities issued previously or hereafter under the Indenture are collectively referred to herein as the “Indenture Securities.”

The Notes will be unsecured and unsubordinated obligations of PPL Capital Funding and will rank equally in right of payment with PPL Capital Funding’s existing unsecured and unsubordinated indebtedness and senior in right of payment to PPL Capital Funding’s subordinated indebtedness. The Notes will be fully and unconditionally guaranteed (the “Guarantees”) by PPL Corporation as to payment of principal, premium, if any, and interest. The Guarantees will be PPL Corporation’s unsecured obligations and will rank equally in right of payment with PPL Corporation’s other unsecured and unsubordinated indebtedness.

The Notes will be issued in fully registered form only, without coupons. The Notes will be initially represented by one or more fully registered global securities (the “Global Securities”) deposited with the Trustee, as custodian for DTC, as depositary, and registered in the name of DTC or DTC’s nominee. A beneficial interest in a Global Security will be shown on, and transfers or exchanges thereof will be effected only through, records maintained by DTC and its participants, as described below under “—Book-Entry Only Issuance—The Depository Trust Company.” The authorized denominations of the Notes will be \$2,000 and any larger amount that is an integral multiple of \$1,000. Except in limited circumstances described below, the Notes will not be exchangeable for Notes in definitive certificated form.

The Notes are initially being offered in one series in the principal amount of \$400,000,000. We may, without the consent of the Holders of the Notes, increase the principal amount of the series and issue additional notes of such series having the same ranking, interest rate, maturity and other terms (other than the price to public, the date of issuance and, in some circumstances, the initial interest accrual date and the initial interest payment date, if applicable) as the Notes, provided that any such additional notes either shall be fungible with the original Notes for federal income tax purposes or shall be issued under a different CUSIP. Any such additional notes may, together with the Notes, constitute a single series of securities under the Indenture. The Notes and any additional notes of the same series having the same terms as the Notes offered hereby subsequently issued under the Indenture will be treated as a single class for all purposes under the Indenture, including, without limitation, voting waivers and amendments.

---

## **Table of Contents**

### **Principal and Interest**

The Notes will mature on December 1, 2022 (the “Stated Maturity Date”) and will bear interest from the date of original issuance at the rate of 3.50% per annum. Interest will be payable semi-annually on June 1 and December 1 of each year (each, an “Interest Payment Date”), commencing on June 1, 2013, and at maturity, whether at the Stated Maturity Date, upon redemption, or otherwise (“Maturity”). Subject to certain exceptions, the Indenture provides for the payment of interest on an Interest Payment Date only to persons in whose names the Notes are registered at the close of business on the Regular Record Date, which will be the May 15 and November 15 (whether or not a Business Day), as the case may be, immediately preceding the applicable Interest Payment Date; except that interest payable at Maturity will be paid to the person to whom principal is paid. Interest will be calculated on the basis of a 360-day year consisting of twelve 30-day months, and with respect to any period less than a full calendar month, on the basis of the actual number of days elapsed during the period.

### **Payment**

So long as the Notes are registered in the name of DTC, as depositary for the Notes as described herein under “—Book-Entry Only Issuance—The Depository Trust Company” or DTC’s nominee, payments on the Notes will be made as described therein.

If we default in paying interest on a Note, we will pay such interest either

- on a special record date fixed by the Trustee between 10 and 15 days before the payment; or
- in any other lawful manner of payment that is consistent with the requirements of any securities exchange on which the Notes may be listed for trading if deemed practicable by the Trustee. (See Section 307.)

We will pay principal, premium, if any, and interest on the Notes at Maturity upon presentation of the Notes at the corporate trust office of The Bank of New York Mellon in New York, New York, as our Paying Agent. In our discretion, we may change the place of payment on the Notes, and we may remove any Paying Agent and may appoint one or more additional Paying Agents (including us or any of our affiliates). (See Section 602.)

If any Interest Payment Date, Redemption Date or the Maturity of a Note falls on a day that is not a Business Day, the required payment of principal, premium, if any, and/or interest will be made on the next succeeding Business Day as if made on the date such payment was due, and no interest will accrue on such payment for the period from and after such Interest Payment Date, Redemption Date or the Maturity, as the case may be, to the date of such payment on the next succeeding Business Day. “Business Day” means any day, other than a Saturday or Sunday, that is not a day on which banking institutions or trust companies are generally authorized or required by law, regulation or executive order to close in The City of New York or other city in which any Paying Agent for the Notes is located. (See Section 113.)

### **Redemption**

We may, at our option, redeem the Notes, in whole at any time or in part from time to time. If we redeem the Notes before September 1, 2022 (the date that is three months prior to the Stated Maturity Date), the Notes will be redeemed by us at a redemption price equal to the greater of:

(1) 100% of the principal amount of the Notes to be so redeemed; and

(2) as determined by the Quotation Agent, the sum of the present values of the remaining scheduled payments of principal and interest on the Notes to be so redeemed (not including any portion of such payments of interest accrued to the date of redemption) discounted to the Redemption Date on a semi-annual basis (assuming a 360-day year consisting of twelve 30-day months) at the Adjusted Treasury Rate, plus 30 basis points;

plus, in either of the above cases, accrued and unpaid interest on the principal amount being redeemed to, but not including, the Redemption Date.

---

## Table of Contents

If we redeem the Notes on or after September 1, 2022, the Notes will be redeemed by us at a redemption price equal to 100% of the principal amount of the Notes to be so redeemed, plus accrued and unpaid interest on the principal amount being redeemed to, but not including, the Redemption Date.

For purposes of calculating the redemption price, the following terms will have the meanings set forth below:

*“Adjusted Treasury Rate”* means, with respect to any Redemption Date, the rate per annum equal to the semi-annual equivalent yield to maturity of the Comparable Treasury Issue, assuming a price for the Comparable Treasury Issue (expressed as a percentage of its principal amount) equal to the Comparable Treasury Price for that Redemption Date.

*“Comparable Treasury Issue”* means the United States Treasury security selected by the Quotation Agent as having an actual or interpolated maturity comparable to the remaining term of the Notes to the Stated Maturity Date that would be utilized, at the time of selection and in accordance with customary financial practice, in pricing new issues of corporate debt securities of comparable maturity to the remaining term of the Notes.

*“Comparable Treasury Price”* means, with respect to any Redemption Date:

- the average of five Reference Treasury Dealer Quotations for that Redemption Date, after excluding the highest and lowest Reference Treasury Dealer Quotations; or
- if the Quotation Agent obtains fewer than five Reference Treasury Dealer Quotations, the average of all of those quotations received.

*“Quotation Agent”* means one of the Reference Treasury Dealers appointed by us.

*“Reference Treasury Dealer”* means:

- each of Morgan Stanley & Co. LLC and RBC Capital Markets, LLC and a Primary Treasury Dealer (as defined below) selected by each of Mitsubishi UFJ Securities (USA), Inc. and Wells Fargo Securities, LLC, respectively, and their respective successors, unless any of them ceases to be a primary U.S. government securities dealer in the United States (a “Primary Treasury Dealer”), in which case we will substitute another Primary Treasury Dealer; and
- any other Primary Treasury Dealer selected by us.

*“Reference Treasury Dealer Quotations”* means, with respect to each Reference Treasury Dealer and any Redemption Date, the average, as determined by the Quotation Agent, of the bid and asked prices for the Comparable Treasury Issue (expressed in each case as a percentage of its principal amount), as provided to the Quotation Agent by that Reference Treasury Dealer at 5:00 p.m., New York City time, on the third business day preceding that Redemption Date.

The Notes will not be subject to a sinking fund or other mandatory redemption and will not be repayable at the option of the Holder of a Note prior to the Stated Maturity Date.

Notes will be redeemable upon notice by mail between 30 and 60 days prior to the Redemption Date. If less than all of the Notes are to be redeemed, the Trustee will select the Notes for redemption in such manner as it deems fair and appropriate. (See Sections 403 and 404.)

Notes called for redemption will cease to bear interest on the Redemption Date. We will pay the redemption price and any accrued interest once you surrender the Note for redemption. (See Section 405.) If only part of a Note is redeemed, the Trustee will deliver to you a new Note for the remaining portion without charge. (See Section 406.)

Upon giving notice of redemption, PPL Capital Funding may make any redemption at its option conditional upon the receipt by the Paying Agent, on or prior to the date fixed for redemption, of money sufficient to pay the

**Table of Contents**

redemption price. If the Paying Agent has not received such money by the date fixed for redemption, such redemption notice shall be of no force and effect and we will not be required to redeem such Notes. (See Section 404.)

**Form; Transfers; Exchanges**

So long as the Notes are registered in the name of DTC, as depositary for the Notes as described herein under “—Book-Entry Only Issuance—The Depository Trust Company” or DTC’s nominee, transfers and exchanges of beneficial interests in the Notes will be made as described therein. In the event that the book-entry only system is discontinued, and the Notes are issued in certificated form, you may exchange or transfer Notes at the corporate trust office of the Trustee. Notes presented or surrendered for registration of transfer or for exchange shall (if so required by us or the Trustee) be duly endorsed or shall be accompanied by a written instrument of transfer in the form satisfactory to us and the Trustee, duly executed by the Holder thereof or his attorney duly authorized in writing. The Trustee acts as our agent for registering Notes in the names of Holders and transferring debt securities. We may appoint another agent or act as our own agent for this purpose. The entity performing the role of maintaining the list of registered Holders is called the “Security Registrar.” It will also perform transfers. In our discretion, we may change the place for registration of transfer of the Notes and may remove and/or appoint one or more additional Security Registrars (including us or any of our affiliates). (See Sections 305 and 602.)

There will be no service charge for any transfer or exchange of the Notes, but you may be required to pay a sum sufficient to cover any tax or other governmental charge payable in connection therewith. We may block the transfer or exchange of (1) Notes during a period of 15 days prior to giving any notice of redemption or (2) any Note selected for redemption in whole or in part, except the unredeemed portion of any Note being redeemed in part. (See Section 305.)

**Guarantees**

PPL Corporation will fully and unconditionally guarantee the payment of principal, premium, if any, and any interest on the Notes, when due and payable, whether at the Stated Maturity Date, by declaration of acceleration, call for redemption or otherwise, in accordance with the terms of the Notes and the Indenture. The Guarantees will remain in effect until the entire principal, premium, if any, and interest on the Notes has been paid in full or otherwise discharged in accordance with the provisions of the Indenture. (See Article Fourteen.)

**Events of Default**

An “Event of Default” with respect to the Notes will occur if

- we do not pay any interest on any Note within 30 days of the due date;
- we do not pay principal or premium, if any, on any Note on its due date;
- we remain in breach of a covenant (excluding covenants solely applicable to a specific series other than the Notes) or warranty of the Indenture for 90 days after we receive a written notice of default stating we are in breach and requiring remedy of the breach; the notice must be sent by either the Trustee or Holders of 25% of the aggregate principal amount of the outstanding Indenture Securities of the affected series; the Trustee or such Holders can agree to extend the 90-day period and such an agreement to extend will be automatically deemed to occur if we are diligently pursuing action to correct the default;
- PPL Corporation’s Guarantees of the Notes cease to be effective (except in accordance with their terms), are found in any judicial proceeding to be unenforceable or invalid, or are denied or disaffirmed (except in accordance with their terms); or
- we file for bankruptcy or certain other similar events in bankruptcy, insolvency, receivership or reorganization occur.

(See Section 801.)

---

## [Table of Contents](#)

No Event of Default with respect to the Notes necessarily constitutes an Event of Default with respect to the Indenture Securities of any other series issued under the Indenture.

### **Remedies**

#### ***Acceleration***

*Any One Series.* If an Event of Default occurs and is continuing with respect to any one series of Indenture Securities, then either the Trustee or the Holders of 25% in principal amount of the outstanding Indenture Securities of such series may declare the principal amount of all of the Indenture Securities of such series to be due and payable immediately.

*More Than One Series.* If an Event of Default occurs and is continuing with respect to more than one series of Indenture Securities, then either the Trustee or the Holders of 25% of the aggregate principal amount of the outstanding Indenture Securities of all such series, considered as one class, may make such declaration of acceleration. Thus, if there is more than one series affected, the action by the Holders of 25% of the aggregate principal amount of the outstanding Indenture Securities of any particular series will not, in itself, be sufficient to make a declaration of acceleration. (See Section 802.)

#### ***Rescission of Acceleration***

After the declaration of acceleration has been made and before the Trustee has obtained a judgment or decree for payment of the money due, such declaration and its consequences will be rescinded and annulled, if

- we pay or deposit with the Trustee a sum sufficient to pay
  - all overdue interest;
  - the principal of and any premium on the Notes which have become due otherwise than by such declaration of acceleration and interest thereon;
  - interest on overdue interest to the extent lawful; and
  - all amounts due to the Trustee under the Indenture; and
- all Events of Default, other than the nonpayment of the principal which has become due solely by such declaration of acceleration, have been cured or waived as provided in the Indenture.

No such rescission shall affect any subsequent Event of Default or impair any right consequent thereon. (See Section 802.) For more information as to waiver of defaults, see “—Waiver of Default and of Compliance” below.

#### ***Control by Holders; Limitations***

Subject to the Indenture, if an Event of Default with respect to the Indenture Securities of any one series occurs and is continuing, the Holders of a majority in principal amount of the outstanding Indenture Securities of that series will have the right to

- direct the time, method and place of conducting any proceeding for any remedy available to the Trustee, or
- exercise any trust or power conferred on the Trustee with respect to the Indenture Securities of such series.

If an Event of Default is continuing with respect to more than one series of Indenture Securities, the Holders of a majority in aggregate principal amount of the outstanding Indenture Securities of all such series, considered as one class, will have the right to make such direction, and not the Holders of the Indenture Securities of any one of such series.



---

## **Table of Contents**

These rights of Holders to make direction are subject to the following limitations:

- the Holders' directions may not conflict with any law or the Indenture; and
- the Holders' directions may not involve the Trustee in personal liability where the Trustee believes indemnity is not adequate.

The Trustee may also take any other action it deems proper that is consistent with the Holders' direction. (See Sections 812 and 903.) With respect to Events of Default and other defaults in the performance of, or breach of, covenants in the Indenture that do not constitute Events of Default, if any such Event of Default or other default occurs and is continuing after any applicable notice and/or cure period, then the Trustee may in its discretion (and subject to the rights of the Holders to control remedies as described above and certain other conditions specified in the Indenture) bring such judicial proceedings as the Trustee shall deem appropriate or proper.

The Indenture provides that no Holder of any Indenture Security will have any right to institute any proceeding, judicial or otherwise, with respect to the Indenture for the appointment of a receiver or trustee, or for any other remedy thereunder, unless

- that Holder has previously given the Trustee written notice of a continuing Event of Default;
- the Holders of 25% in aggregate principal amount of the outstanding Indenture Securities of all affected series, considered as one class, have made written request to the Trustee to institute proceedings in respect of that Event of Default and have offered the Trustee reasonable indemnity against costs and liabilities incurred in complying with such request; and
- for 60 days after receipt of such notice, the Trustee has failed to institute any such proceeding and no direction inconsistent with such request has been given to the Trustee during such 60-day period by the Holders of a majority in aggregate principal amount of outstanding Indenture Securities of all affected series, considered as one class.

Furthermore, no Holder will be entitled to institute any such action if and to the extent that such action would disturb or prejudice the rights of other Holders. (See Sections 807 and 903.)

However, each Holder has an absolute and unconditional right to receive payment when due and to bring a suit to enforce that right, and such rights shall not be impaired without the consent of such Holder. (See Sections 807 and 808.)

### **Notice of Default**

The Trustee is required to give the Holders of the Notes notice of any default under the Indenture to the extent required by the Trust Indenture Act, unless such default has been cured or waived; except that in the case of an Event of Default of the character specified above in the third bullet point under "Events of Default," no such notice shall be given to such Holders until at least 75 days after the occurrence thereof. (See Section 902.) The Trust Indenture Act currently permits the Trustee to withhold notices of default (except for certain payment defaults) if the Trustee in good faith determines the withholding of such notice to be in the interests of the Holders.

PPL Capital Funding and PPL Corporation will furnish the Trustee with an annual statement as to their compliance with the conditions and covenants in the Indenture. (See Section 605.)

### **Waiver of Default and of Compliance**

The Holders of a majority in principal amount of the outstanding Notes may waive, on behalf of the Holders of all outstanding Notes, any past default under the Indenture, except a default in the payment of principal or premium, if any, or interest, or with respect to compliance with certain provisions of the Indenture that cannot be amended without the consent of the Holder of each outstanding Indenture Security of the affected series. (See Section 813.)

---

## [Table of Contents](#)

Compliance with certain covenants in the Indenture or otherwise provided with respect to Indenture Securities may be waived by the Holders of a majority in aggregate principal amount of the affected Indenture Securities, considered as one class. (See Section 606.)

### **Consolidation, Merger and Conveyance of Assets as an Entirety**

Subject to the provisions described in the next paragraph, each of PPL Capital Funding and PPL Corporation has agreed in the Indenture to preserve its corporate existence. (See Section 604.)

PPL Capital Funding and PPL Corporation have each also agreed not to consolidate with or merge into any other entity or convey, transfer or lease its properties and assets substantially as an entirety to any entity unless

- the entity formed by such consolidation or into which PPL Capital Funding or PPL Corporation, as the case may be, is merged or the entity which acquires or which leases its property and assets substantially as an entirety is a corporation or limited liability company organized and existing under the laws of the United States of America or any State thereof or the District of Columbia, and expressly assumes, by supplemental indenture, in the form satisfactory to the Trustee, the due and punctual payment of the principal, premium, if any, and interest on all the outstanding Notes (or the Guarantees, as the case may be) and the performance of all of its covenants under the Indenture; and
- immediately after giving effect to such transaction, no Event of Default, and no event which, after notice or lapse of time or both, would become an Event of Default, will have occurred and be continuing. (See Section 1101.)

The Indenture does not prevent or restrict:

- any consolidation or merger after the consummation of which PPL Capital Funding or PPL Corporation would be the surviving or resulting entity; or
- any conveyance or other transfer, or lease, of any part of the properties of PPL Capital Funding or PPL Corporation which does not constitute the entirety, or substantially the entirety, thereof. (See Section 1103.)

### **Modification of Indenture**

*Without Holder Consent.* Without the consent of any Holders of Indenture Securities, PPL Capital Funding, PPL Corporation and the Trustee may enter into one or more supplemental indentures for any of the following purposes:

- to evidence the succession of another entity to PPL Capital Funding or PPL Corporation;
- to add one or more covenants or other provisions for the benefit of the Holders of all or any series or tranche of Indenture Securities, or to surrender any right or power conferred upon us;
- to add any additional Events of Default for all or any series of Indenture Securities;
- to change or eliminate any provision of the Indenture or to add any new provision to the Indenture that does not adversely affect the interests of the Holders in any material respect;
- to provide security for the Indenture Securities of any series;
- to establish the form or terms of Indenture Securities of any series or tranche as permitted by the Indenture;
- to provide for the issuance of bearer securities;
- to evidence and provide for the acceptance of appointment of a separate or successor Trustee;

Table of Contents

- to provide for the procedures required to permit the utilization of a noncertificated system of registration for any series or tranche of Indenture Securities;
- to change any place or places where
  - we may pay principal, premium and interest,
  - Indenture Securities may be surrendered for transfer or exchange, and
  - notices and demands to or upon PPL Capital Funding or PPL Corporation may be served; or
- to cure any ambiguity, defect or inconsistency or to make any other changes that do not adversely affect the interests of the Holders in any material respect.

If the Trust Indenture Act is amended after the date of the Indenture so as to require changes to the Indenture or so as to permit changes to, or the elimination of, provisions which, at the date of the Indenture or at any time thereafter, were required by the Trust Indenture Act to be contained in the Indenture, the Indenture will be deemed to have been amended so as to conform to such amendment or to effect such changes or elimination, and PPL Capital Funding, PPL Corporation and the Trustee may, without the consent of any Holders, enter into one or more supplemental indentures to effect or evidence such amendment. (See Section 1201.)

*With Holder Consent.* Except as provided above, the consent of the Holders of at least a majority in aggregate principal amount of the Indenture Securities of all outstanding series, considered as one class, is generally required for the purpose of adding to, changing or eliminating any of the provisions of the Indenture pursuant to a supplemental indenture. However, if less than all of the series of outstanding Indenture Securities are directly affected by a proposed supplemental indenture, then such proposal only requires the consent of the Holders of a majority in aggregate principal amount of the outstanding Indenture Securities of all directly affected series, considered as one class. Moreover, if the Indenture Securities of any series have been issued in more than one tranche and if the proposed supplemental indenture directly affects the rights of the Holders of Indenture Securities of one or more, but less than all, of such tranches, then such proposal only requires the consent of the Holders of a majority in aggregate principal amount of the outstanding Indenture Securities of all directly affected tranches, considered as one class.

However, no amendment or modification may, without the consent of the Holder of each outstanding Indenture Security directly affected thereby,

- change the stated maturity of the principal or interest on any Indenture Security (other than pursuant to the terms thereof), or reduce the principal amount, interest or premium payable or change the currency in which any Indenture Security is payable, or impair the right to bring suit to enforce any payment;
- reduce the percentages of Holders whose consent is required for any supplemental indenture or waiver or reduce the requirements for quorum and voting under the Indenture; or
- modify certain of the provisions in the Indenture relating to supplemental indentures and waivers of certain covenants and past defaults.

A supplemental indenture which changes or eliminates any provision of the Indenture expressly included solely for the benefit of Holders of Indenture Securities of one or more particular series or tranches will be deemed not to affect the rights under the Indenture of the Holders of Indenture Securities of any other series or tranche. (See Section 1202.)

We will be entitled to set any day as a record date for the purpose of determining the Holders of outstanding Indenture Securities of any series entitled to give or take any demand, direction, consent or other action under the Indenture, in the manner and subject to the limitations provided in the Indenture. In certain circumstances, the Trustee also will be entitled to set a record date for action by Holders. If such a record date is set for any action to be taken by Holders of particular Indenture Securities, such action may be taken only by persons who are Holders of such Indenture Securities at the close of business on the record date. (See Section 104.)

---

## **Table of Contents**

The Indenture provides that certain Indenture Securities, including those for which payment or redemption money has been deposited or set aside in trust as described under “—Satisfaction and Discharge” below, will not be deemed to be “outstanding” in determining whether the Holders of the requisite principal amount of the outstanding Indenture Securities have given or taken any demand, direction, consent or other action under the Indenture as of any date, or are present at a meeting of Holders for quorum purposes. (See Section 101.)

### **Satisfaction and Discharge**

Any Indenture Securities or any portion will be deemed to have been paid for purposes of the Indenture and, at PPL Capital Funding’s election, the entire indebtedness of PPL Capital Funding and PPL Corporation will be satisfied and discharged, if there shall have been irrevocably deposited with the Trustee or any Paying Agent (other than PPL Capital Funding or PPL Corporation), in trust

- money sufficient,
- in the case of a deposit made prior to the maturity of such Indenture Securities, non-redeemable Government Obligations (as defined in the Indenture) sufficient, or
- a combination of items listed in the preceding two bullet points, which in total are sufficient,

to pay when due the principal of, and any premium and interest due and to become due on such Indenture Securities or portions thereof on and prior to the maturity thereof. (See Section 701.)

Subject to certain limitations, the Indenture will be deemed satisfied and discharged when no Indenture Securities remain outstanding and when we have paid all other sums payable by us under the Indenture. (See Section 702.)

All moneys we pay to the Trustee or any Paying Agent on Indenture Securities that remain unclaimed at the end of two years after payments have become due will be paid to PPL Capital Funding upon its request. Thereafter, the Holder of such Indenture Security may look only to us for payment. (See Section 603.)

### **Resignation and Removal of the Trustee; Deemed Resignation**

The Trustee may resign at any time by giving written notice to us.

The Trustee may also be removed by act of the Holders of a majority in principal amount of the then outstanding Indenture Securities of any series.

No resignation or removal of the Trustee and no appointment of a successor trustee will become effective until the acceptance of appointment by a successor trustee in accordance with the requirements of the Indenture.

Under certain circumstances, we may appoint a successor trustee and if the successor accepts, the Trustee will be deemed to have resigned. (See Section 910.)

### **Notices**

Notices to Holders of Notes will be given by mail to the addresses of the Holders as they may appear in the security register. (See Section 106.)

### **Title**

PPL Capital Funding, PPL Corporation, the Trustee, and any agent of PPL Capital Funding, PPL Corporation or the Trustee, will treat the person or entity in whose name Indenture Securities are registered as the absolute owner of those Indenture Securities (whether or not the Indenture Securities may be overdue) for the purpose of making payments and for all other purposes irrespective of notice to the contrary. (See Section 308.)

---

## [Table of Contents](#)

### **Governing Law**

The Indenture and the Indenture Securities provide that they will be governed by and construed in accordance with the laws of the State of New York, except to the extent the Trust Indenture Act shall be applicable. (See Section 112.)

### **Regarding the Trustee**

The Trustee under the Indenture is The Bank of New York Mellon (“BNYM”). In addition to acting as Trustee, BNYM also maintains various banking and trust relationships with us and some of our affiliates.

### **Book-Entry Only Issuance—The Depository Trust Company**

DTC will act as the initial securities depository for the Notes. The Notes will be issued in fully registered form and will be evidenced by one or more global Notes registered in the name of DTC’s nominee, Cede & Co., or such other name as may be requested by an authorized representative of DTC. The global Notes will be deposited with the Trustee as custodian for DTC.

DTC advises that it is a New York limited-purpose trust company organized under the New York Banking Law, a “banking organization” within the meaning of the New York Banking Law, a member of the Federal Reserve System, a “clearing corporation” within the meaning of the New York Uniform Commercial Code and a “clearing agency” registered pursuant to the provisions of Section 17A of the Securities Exchange Act of 1934, as amended. DTC holds securities that its participants (“Direct Participants”) deposit with it and also facilitates the settlement among Direct Participants of sales and other securities transactions, including transfers and pledges, in deposited securities through electronic computerized book-entry changes in Direct Participants’ accounts, thereby eliminating the need for physical movement of securities certificates. Direct Participants include both U.S. and non-U.S. securities brokers and dealers, banks, trust companies, clearing corporations and certain other organizations. The depository is owned by a number of its Direct Participants and by the New York Stock Exchange and the Financial Industry Regulatory Authority, Inc. Access to DTC’s system is also available to others, including both U.S. and non-U.S. securities brokers and dealers, banks, trust companies and clearing corporations that clear transactions through, or maintain a custodial relationship with, a Direct Participant, either directly or indirectly (“Indirect Participants”). The rules applicable to DTC and its participants are on file with the SEC.

Purchases of the Notes under the DTC system must be made by or through Direct Participants, which will receive a credit for the Notes on DTC’s records. The ownership interest of each actual purchaser (“Beneficial Owner”) is in turn to be recorded on the Direct and Indirect Participants’ records. Beneficial Owners will not receive written confirmation from DTC of their purchases, but Beneficial Owners should receive written confirmations providing details of the transactions, as well as periodic statements of their holdings, from the Direct or Indirect Participant through which they purchased Notes. Transfers of ownership interests on the Notes are to be accomplished by entries made on the books of Direct and Indirect Participants acting on behalf of Beneficial Owners. Beneficial Owners will not receive certificates representing their ownership interests in Notes, except in the event that use of the book-entry system for the Notes is discontinued.

To facilitate subsequent transfers, all Notes deposited by Direct Participants with DTC are registered in the name of DTC’s nominee, Cede & Co., or such other name as may be requested by an authorized representative of DTC. The deposit of the Notes with DTC and their registration in the name of Cede & Co. or such other nominee do not effect any change in beneficial ownership. DTC has no knowledge of the actual Beneficial Owners of the Notes; DTC’s records reflect only the identity of the participants to whose accounts the Notes are credited, which may or may not be the Beneficial Owners. The Direct and Indirect Participants will remain responsible for keeping account of their holdings on behalf of their customers.

---

## Table of Contents

Conveyance of notices and other communications by DTC to Direct Participants, by Direct Participants to Indirect Participants, and by Direct Participants and Indirect Participants to Beneficial Owners, will be governed by arrangements among them, subject to any statutory or regulatory requirements as may be in effect from time to time. Notices will be sent to DTC.

Neither DTC nor Cede & Co. (nor such other DTC nominee) will consent or vote with respect to the Notes unless authorized by a Direct Participant in accordance with DTC's procedures. Under its usual procedures, DTC mails an omnibus proxy to us as soon as possible after the record date. The omnibus proxy assigns the voting or consenting rights of Cede & Co. to those Direct Participants to whose accounts the Notes are credited on the record date. We believe that these arrangements will enable the Beneficial Owners to exercise rights equivalent in substance to the rights that can be directly exercised by a registered holder of the Notes.

Payments of principal, premium, if any, and interest on the Notes will be made to Cede & Co. (or such other nominee of DTC). DTC's practice is to credit Direct Participants' accounts upon DTC's receipt of funds and corresponding detail information from us or the Trustee, on the payable date in accordance with their respective holdings shown on DTC's records. Payments by participants to Beneficial Owners will be governed by standing instructions and customary practices and will be the responsibility of each participant and not of DTC, the Trustee or us, subject to any statutory or regulatory requirements as may be in effect from time to time. Payment of principal, premium, if any, and interest to Cede & Co. (or other such nominee of DTC) is our responsibility. Disbursement of such payments to Direct Participants will be the responsibility of DTC, and disbursement of such payments to the Beneficial Owners is the responsibility of Direct and Indirect Participants.

A Beneficial Owner will not be entitled to receive physical delivery of the Notes. Accordingly, each Beneficial Owner must rely on the procedures of DTC to exercise any rights under the Notes.

DTC may discontinue providing its services as securities depository with respect to the Notes at any time by giving us or the Trustee reasonable notice. In the event no successor securities depository is obtained, certificates for the Notes will be printed and delivered.

The information in this section concerning DTC and DTC's book-entry system has been obtained from sources that we believe to be reliable, but neither we nor the underwriters take any responsibility for the accuracy of this information.

[Table of Contents](#)**UNDERWRITING**

PPL Capital Funding, PPL Corporation and the underwriters for the offering named below have entered into an underwriting agreement dated the date hereof with respect to the Notes. Subject to certain terms and conditions in the underwriting agreement, we have agreed to sell to the underwriters and each underwriter has severally agreed to purchase the principal amount of Notes indicated in the following table:

<b>Underwriter</b>	<b>Principal Amount of Notes</b>
Mitsubishi UFJ Securities (USA), Inc.	\$ 80,000,000
Morgan Stanley & Co. LLC	80,000,000
RBC Capital Markets, LLC	80,000,000
Wells Fargo Securities, LLC	80,000,000
Deutsche Bank Securities Inc.	20,000,000
Lloyds Securities Inc.	20,000,000
SMBC Nikko Capital Markets Limited	20,000,000
SunTrust Robinson Humphrey, Inc.	20,000,000
Total	<u>\$400,000,000</u>

The underwriters are committed to take and pay for all of the Notes being offered, if any are taken.

The underwriters initially propose to offer part of the Notes directly to the public at the public offering price set forth on the cover page hereof and part to certain dealers at the public offering price minus a selling concession not in excess of 0.40% per Note. In addition, any underwriter may allow, and those selected dealers may reallow, a selling concession to certain other dealers of up to 0.20% per Note. After the initial offering of the Notes, the offering price and other selling terms may from time to time be varied. The offering of the Notes by the underwriters is subject to receipt and acceptance and subject to the underwriters' right to reject any order in whole or in part.

The Notes are a new issue of securities with no established trading market. We have been advised by the underwriters that they presently intend to make a market in the Notes as permitted by applicable laws and regulations. The underwriters are not obligated, however, to do so and any such market making may be discontinued at any time without notice at the sole discretion of the underwriters. Accordingly, no assurance can be given as to the liquidity of, or trading markets for, the Notes.

In connection with the offering, the underwriters may purchase and sell Notes in the open market. These transactions may include short sales, stabilizing transactions and purchases to cover positions created by short sales. Short sales involve the sale by the underwriters of a greater number of Notes than they are required to purchase in the offering. Stabilizing transactions consist of certain bids or purchases made for the purpose of preventing or retarding a decline in the market price of the Notes while the offering is in progress.

The underwriters also may impose a penalty bid. This occurs when a particular underwriter repays to the underwriters a portion of the underwriting discount received by it because the representatives have repurchased Notes sold by or for the account of such underwriter in stabilizing or short covering transactions.

These activities by the underwriters, as well as other purchases by the underwriters for their own accounts, may stabilize, maintain or otherwise affect the market price of the Notes. As a result, the price of the Notes may be higher than the price that otherwise might exist in the open market. If these activities are commenced, they may be discontinued by the underwriters at any time. These transactions may be effected in the over-the-counter market or otherwise.

The Company estimates that its share of the total expenses of the offering, excluding the underwriting discount, will be approximately \$725,000.



---

## Table of Contents

PPL Capital Funding and PPL Corporation have agreed to indemnify the several underwriters against certain liabilities, including liabilities under the Securities Act of 1933, as amended.

The underwriters and their respective affiliates are full service financial institutions engaged in various activities, which may include sales and trading, commercial and investment banking, advisory, investment management, investment research, principal investment, hedging, market making, brokerage and other financial and non-financial activities and services. In the ordinary course of their business, certain of the underwriters and their affiliates have engaged and may in the future engage in investment and commercial banking, or financial advisory transactions with PPL Capital Funding, PPL Corporation and certain of their affiliates, for which they received or will receive customary fees and expenses.

In the ordinary course of their various business activities, the underwriters and their respective affiliates, officers, directors and employees may purchase, sell or hold a broad array of investments and actively trade securities, derivatives, loans, commodities, currencies, credit default swaps and other financial instruments for their own account and for the accounts of their customers, and such investment and trading activities may involve or relate to assets, securities and/or instruments of the issuer (directly, as collateral securing other obligations or otherwise) and/or persons and entities with relationships with the issuer. The underwriters and their respective affiliates may also communicate independent investment recommendations, market color or trading ideas and/or publish or express independent research views in respect of such assets, securities or instruments and may at any time hold, or recommend to clients that they should acquire, long and/or short positions in such assets, securities and instruments.

SMBC Nikko Capital Markets Limited is not a U.S. registered broker-dealer and, therefore, intends to participate in the offering outside of the United States and, to the extent that the offering is within the United States, as facilitated by an affiliated U.S. registered broker-dealer, SMBC Nikko Securities America, Inc. ("SMBC Nikko-SI"), as permitted under applicable law. To that end, SMBC Nikko Capital Markets Limited and SMBC Nikko-SI have entered into an agreement pursuant to which SMBC Nikko-SI provides certain advisory and/or other services with respect to this offering. In return for the provision of such services by SMBC Nikko-SI, SMBC Nikko Capital Markets Limited will pay to SMBC Nikko-SI a mutually agreed-fee.

### **Selling Restrictions**

In relation to each Member State of the European Economic Area which has implemented the Prospectus Directive (each, a Relevant Member State), each underwriter has represented and agreed that with effect from and including the date on which the Prospectus Directive is implemented in that Relevant Member State (the Relevant Implementation Date) it has not made and will not make an offer of Notes which are the subject of the offering contemplated by this prospectus supplement to the public in that Relevant Member State other than:

- (a) to any legal entity which is a qualified investor as defined in the Prospectus Directive;
- (b) to fewer than 100 or, if the Relevant Member State has implemented the relevant provision of the 2010 PD Amending Directive, 150, natural or legal persons (other than qualified investors as defined in the Prospectus Directive), as permitted under the Prospectus Directive, subject to obtaining the prior consent of the relevant Dealer or Dealers nominated by the issuer for any such offer; or
- (c) in any other circumstances falling within Article 3(2) of the Prospectus Directive,

provided that no such offer of Notes shall require the issuer or any underwriter to publish a prospectus pursuant to Article 3 of the Prospectus Directive or supplement a prospectus pursuant to Article 16 of the Prospectus Directive.

For the purposes of this provision, the expression an "offer of Notes to the public" in relation to any Notes in any Relevant Member State means the communication in any form and by any means of sufficient information on the terms of the offer and the Notes to be offered so as to enable an investor to decide to purchase or subscribe the Notes, as the same may be varied in that Member State by any measure implementing the Prospectus



## Table of Contents

Directive in that Member State, the expression “Prospectus Directive” means Directive 2003/71/EC (and amendments thereto, including the 2010 PD Amending Directive, to the extent implemented in the Relevant Member State), and includes any relevant implementing measure in the Relevant Member State and the expression “2010 PD Amending Directive” means Directive 2010/73/EU.

Each underwriter has represented and agreed that:

(a) it has only communicated or caused to be communicated and will only communicate or cause to be communicated an invitation or inducement to engage in investment activity (within the meaning of Section 21 of the Financial Services and Markets Act 2000 (“FSMA”)) received by it in connection with the issue or sale of the Notes in circumstances in which Section 21(1) of the FSMA does not apply to the issuer or the guarantor; and

(b) it has complied and will comply with all applicable provisions of the FSMA with respect to anything done by it in relation to the Notes in, from or otherwise involving the United Kingdom.

The Notes may not be offered or sold by means of any document other than (i) to “professional investors” within the meaning of the Securities and Futures Ordinance (Cap.571) of Hong Kong and any rules made thereunder, or (ii) in other circumstances which do not result in the document being a “prospectus” within the meaning of the Companies Ordinance (Cap.32) of Hong Kong or which do not constitute an offer to the public within the meaning of that Ordinance; and no advertisement, invitation or document relating to the Notes may be issued or may be in the possession of any person for the purpose of issue (in each case whether in Hong Kong or elsewhere), which is directed at, or the contents of which are likely to be accessed or read by, the public in Hong Kong (except if permitted to do so under the laws of Hong Kong) other than with respect to Notes which are or are intended to be disposed of only to persons outside Hong Kong or only to “professional investors” within the meaning of the Securities and Futures Ordinance (Cap. 571) of Hong Kong and any rules made thereunder.

This prospectus supplement has not been registered as a prospectus with the Monetary Authority of Singapore. Accordingly, this prospectus supplement and any other document or material in connection with the offer or sale, or invitation for subscription or purchase, of the Notes may not be circulated or distributed, nor may the Notes be offered or sold, or be made the subject of an invitation for subscription or purchase, whether directly or indirectly, to persons in Singapore other than (i) to an institutional investor under Section 274 of the Securities and Futures Act, Chapter 289 of Singapore (the “SFA”), (ii) to a relevant person, or any person pursuant to Section 275(1A), and in accordance with the conditions, specified in Section 275 of the SFA or (iii) otherwise pursuant to, and in accordance with the conditions of, any other applicable provision of the SFA.

Where the Notes are subscribed or purchased under Section 275 by a relevant person which is: (a) a corporation (which is not an accredited investor) the sole business of which is to hold investments and the entire share capital of which is owned by one or more individuals, each of whom is an accredited investor; or (b) a trust (where the trustee is not an accredited investor) whose sole purpose is to hold investments and each beneficiary is an accredited investor, shares, debentures and units of shares and debentures of that corporation or the beneficiaries’ rights and interest in that trust shall not be transferable for 6 months after that corporation or that trust has acquired the Notes under Section 275 except: (1) to an institutional investor under Section 274 of the SFA or to a relevant person, or any person pursuant to Section 275(1A), and in accordance with the conditions, specified in Section 275 of the SFA; (2) where no consideration is given for the transfer; or (3) by operation of law.

The Notes have not been and will not be registered under the Financial Instruments and Exchange Law of Japan (the Financial Instruments and Exchange Law) and each underwriter has agreed that it will not offer or sell any Notes, directly or indirectly, in Japan or to, or for the benefit of, any resident of Japan (which term as used herein means any person resident in Japan, including any corporation or other entity organized under the laws of Japan), or to others for re-offering or resale, directly or indirectly, in Japan or to a resident of Japan, except pursuant to an exemption from the registration requirements of, and otherwise in compliance with, the Financial Instruments and Exchange Law and any other applicable laws, regulations and ministerial guidelines of Japan.

---

[Table of Contents](#)**VALIDITY OF THE NOTES AND THE GUARANTEES**

Davis Polk & Wardwell LLP, New York, New York, and Frederick C. Paine, Esq., Senior Counsel of PPL Services Corporation, will pass upon the validity of the Notes and the Guarantees for PPL Capital Funding and PPL Corporation. Sullivan & Cromwell LLP, New York, New York, will pass upon the validity of the Notes and the Guarantees for the underwriters. Davis Polk & Wardwell LLP and Sullivan & Cromwell LLP will rely on the opinion of Mr. Paine as to matters involving the law of the Commonwealth of Pennsylvania. As to matters involving the law of the State of New York, Mr. Paine will rely on the opinion of Davis Polk & Wardwell LLP.

S-23

---

[Table of Contents](#)

**PROSPECTUS**

**PPL Corporation**  
**PPL Capital Funding, Inc.**  
**PPL Energy Supply, LLC**  
**PPL Electric Utilities Corporation**  
Two North Ninth Street  
Allentown, Pennsylvania 18101-1179  
(610) 774-5151

**LG&E and KU Energy LLC**  
**Louisville Gas and Electric Company**  
220 West Main Street  
Louisville, Kentucky 40202  
(502) 627-2000

**Kentucky Utilities Company**  
One Quality Street  
Lexington, Kentucky 40507  
(502) 627-2000

**PPL Corporation**  
Common Stock, Preferred Stock,  
Stock Purchase Contracts, Stock Purchase Units and Depositary Shares

**PPL Capital Funding, Inc.**  
Debt Securities and Subordinated Debt Securities  
Guaranteed by PPL Corporation as described in a supplement to this prospectus

**PPL Energy Supply, LLC**  
Debt Securities, Subordinated Debt Securities and Preferred Securities

**PPL Electric Utilities Corporation**  
Preferred Stock, Preference Stock, Depositary Shares and Debt Securities

**LG&E and KU Energy LLC**  
Debt Securities

**Louisville Gas and Electric Company**  
Debt Securities

**Kentucky Utilities Company**  
Debt Securities

---

We will provide the specific terms of these securities in supplements to this prospectus. You should read this prospectus and the supplements carefully before you invest.

We may offer the securities directly or through underwriters or agents. The applicable prospectus supplement will describe the terms of any particular plan of distribution.

---

**Investing in the securities involves certain risks. See “[Risk Factors](#)” on page 4.**

PPL Corporation’s common stock is listed on the New York Stock Exchange and trades under the symbol “PPL.”

**These securities have not been approved or disapproved by the Securities and Exchange Commission or any state securities commission, nor has the Securities and Exchange Commission or any state securities commission determined that this prospectus is accurate or complete. Any representation to the contrary is a criminal offense.**

**The date of this prospectus is March 28, 2012.**

---

[Table of Contents](#)**TABLE OF CONTENTS**

	<b><u>Page</u></b>
<a href="#"><u>ABOUT THIS PROSPECTUS</u></a>	3
<a href="#"><u>RISK FACTORS</u></a>	4
<a href="#"><u>FORWARD-LOOKING INFORMATION</u></a>	5
<a href="#"><u>PPL CORPORATION</u></a>	7
<a href="#"><u>PPL CAPITAL FUNDING, INC.</u></a>	8
<a href="#"><u>PPL ENERGY SUPPLY, LLC</u></a>	8
<a href="#"><u>PPL ELECTRIC UTILITIES CORPORATION</u></a>	9
<a href="#"><u>LG&amp;E AND KU ENERGY LLC</u></a>	9
<a href="#"><u>LOUISVILLE GAS AND ELECTRIC COMPANY</u></a>	9
<a href="#"><u>KENTUCKY UTILITIES COMPANY</u></a>	9
<a href="#"><u>USE OF PROCEEDS</u></a>	10
<a href="#"><u>RATIOS OF EARNINGS TO FIXED CHARGES AND EARNINGS TO COMBINED FIXED CHARGES AND PREFERRED STOCK DIVIDENDS</u></a>	11
<a href="#"><u>WHERE YOU CAN FIND MORE INFORMATION</u></a>	13
<a href="#"><u>EXPERTS</u></a>	15
<a href="#"><u>VALIDITY OF THE SECURITIES AND THE PPL GUARANTEES</u></a>	16

[Table of Contents](#)**ABOUT THIS PROSPECTUS**

This prospectus is part of a registration statement that PPL Corporation, PPL Capital Funding, Inc. (“PPL Capital Funding”), PPL Energy Supply, LLC (“PPL Energy Supply”), PPL Electric Utilities Corporation (“PPL Electric”), LG&E and KU Energy LLC (“LKE”), Louisville Gas and Electric Company (“LG&E”) and Kentucky Utilities Company (“KU”) have each filed with the Securities and Exchange Commission, or SEC, using the “shelf” registration process. Under this shelf process, we may, from time to time, sell combinations of the securities described in this prospectus in one or more offerings. Each time we sell securities, we will provide a prospectus supplement that will contain a description of the securities we will offer and specific information about the terms of that offering. The prospectus supplement may also add, update or change information contained in this prospectus. You should read both this prospectus and any prospectus supplement together with additional information described under “Where You Can Find More Information.”

We may use this prospectus to offer from time to time:

- shares of PPL Corporation Common Stock, par value \$.01 per share (“PPL Common Stock”);
- shares of PPL Corporation Preferred Stock, par value \$.01 per share (“PPL Preferred Stock”);
- contracts or other rights to purchase shares of PPL Common Stock or PPL Preferred Stock (“PPL Stock Purchase Contracts”);
- stock purchase units, each representing (1) a PPL Stock Purchase Contract and (2) debt securities or preferred trust securities of third parties (such as debt securities or subordinated debt securities of PPL Capital Funding, preferred trust securities of a subsidiary trust or United States Treasury securities) that are pledged to secure the stock purchase unit holders’ obligations to purchase PPL Common Stock or PPL Preferred Stock under the PPL Stock Purchase Contracts (“PPL Stock Purchase Units”);
- PPL Corporation’s Depositary Shares, issued under a deposit agreement and representing a fractional interest in PPL Preferred Stock;
- PPL Capital Funding’s unsecured and unsubordinated debt securities (“PPL Capital Funding Debt Securities”);
- PPL Capital Funding’s unsecured and subordinated debt securities (“PPL Capital Funding Subordinated Debt Securities”);
- PPL Energy Supply’s unsecured and unsubordinated debt securities;
- PPL Energy Supply’s unsecured and subordinated debt securities;
- PPL Energy Supply’s preferred limited liability company membership interests;
- PPL Electric’s Series Preferred Stock (“PPL Electric Preferred Stock”);
- PPL Electric’s Preference Stock (“PPL Electric Preference Stock”);
- PPL Electric’s Depositary Shares, issued under a deposit agreement and representing a fractional interest in PPL Electric Preferred Stock or PPL Electric Preference Stock;
- PPL Electric’s First Mortgage Bonds issued under PPL Electric’s 2001 indenture, as amended and supplemented (“PPL Electric First Mortgage Bonds”), which will be secured by the lien of the 2001 indenture on PPL Electric’s electric distribution and certain transmission properties (subject to certain exceptions to be described in a prospectus supplement);
- LKE’s unsecured and unsubordinated debt securities;
- LG&E’s First Mortgage Bonds issued under LG&E’s 2010 indenture, as amended and supplemented (“LG&E First Mortgage Bonds”), which will be secured by the lien of the 2010 indenture on LG&E’s

---

## Table of Contents

Kentucky electric generation, transmission and distribution properties and natural gas distribution properties (subject to certain exceptions to be described in a prospectus supplement); and

- KU's First Mortgage Bonds issued under KU's 2010 indenture, as amended and supplemented ("KU First Mortgage Bonds"), which will be secured by the lien of the 2010 indenture on KU's Kentucky electric generation, transmission and distribution properties (subject to certain exceptions to be described in a prospectus supplement).

We sometimes refer to the securities listed above collectively as the "Securities."

PPL Corporation will fully and unconditionally guarantee the payment of principal, premium and interest on the PPL Capital Funding Debt Securities and PPL Capital Funding Subordinated Debt Securities as will be described in supplements to this prospectus. We sometimes refer to PPL Corporation's guarantees of PPL Capital Funding Debt Securities as "PPL Guarantees" and PPL Corporation's guarantees of PPL Capital Funding Subordinated Debt Securities as the "PPL Subordinated Guarantees."

Information contained herein relating to each registrant is filed separately by such registrant on its own behalf. No registrant makes any representation as to information relating to any other registrant or Securities or guarantees issued by any other registrant, except that information relating to PPL Capital Funding's Securities is also attributed to PPL Corporation.

As used in this prospectus, the terms "we," "our" and "us" generally refer to:

- PPL Corporation with respect to Securities, PPL Guarantees or PPL Subordinated Guarantees issued by PPL Corporation or PPL Capital Funding;
- PPL Energy Supply with respect to Securities issued by PPL Energy Supply;
- PPL Electric, with respect to Securities issued by PPL Electric;
- LKE, with respect to Securities issued by LKE;
- LG&E, with respect to Securities issued by LG&E; and
- KU, with respect to Securities issued by KU.

For more detailed information about the Securities, the PPL Guarantees and the PPL Subordinated Guarantees, you can read the exhibits to the registration statement. Those exhibits have been either filed with the registration statement or incorporated by reference to earlier SEC filings listed in the registration statement.

## **RISK FACTORS**

Investing in the Securities involves certain risks. You are urged to read and consider the risk factors relating to an investment in the Securities described in the Annual Reports on Form 10-K of PPL Corporation, PPL Energy Supply, PPL Electric, LKE, LG&E and KU, as applicable, for the year ended December 31, 2011, and incorporated by reference in this prospectus. Before making an investment decision, you should carefully consider these risks as well as other information we include or incorporate by reference in this prospectus. The risks and uncertainties we have described are not the only ones affecting PPL Corporation, PPL Energy Supply, PPL Electric, LKE, LG&E and KU. The prospectus supplement applicable to each type or series of Securities we offer may contain a discussion of additional risks applicable to an investment in us and the particular type of Securities we are offering under that prospectus supplement.

---

[Table of Contents](#)

### **FORWARD-LOOKING INFORMATION**

Certain statements included or incorporated by reference in this prospectus, including statements concerning expectations, beliefs, plans, objectives, goals, strategies, future events or performance and underlying assumptions and other statements which are other than statements of historical fact are “forward-looking statements” within the meaning of the federal securities laws. Although we believe that the expectations and assumptions reflected in these statements are reasonable, there can be no assurance that these expectations will prove to be correct. Forward-looking statements are subject to many risks and uncertainties, and actual results may differ materially from the results discussed in forward-looking statements. In addition to the specific factors discussed in the “Risk Factors” section in this prospectus and our reports that are incorporated by reference, the following are among the important factors that could cause actual results to differ materially from the forward-looking statements:

- fuel supply cost and availability;
- continuing ability to recover fuel costs and environmental expenditures in a timely manner at LG&E and KU, and natural gas supply costs at LG&E;
- weather conditions affecting generation, customer energy use and operating costs;
- operation, availability and operating costs of existing generation facilities;
- the length of scheduled and unscheduled outages at our generating facilities;
- transmission and distribution system conditions and operating costs;
- potential expansion of alternative sources of electricity generation;
- potential laws or regulations to reduce emissions of “greenhouse” gases or the physical effects of climate change;
- collective labor bargaining negotiations;
- the outcome of litigation against us;
- potential effects of threatened or actual terrorism, war or other hostilities, or natural disasters;
- our commitments and liabilities;
- market demand and prices for energy, capacity, transmission services, emission allowances, renewable energy credits and delivered fuel;
- competition in retail and wholesale power and natural gas markets;
- liquidity of wholesale power markets;
- defaults by counterparties under energy, fuel or other power product contracts;
- market prices of commodity inputs for ongoing capital expenditures;
- capital market conditions, including the availability of capital or credit, changes in interest rates and certain economic indices, and decisions regarding capital structure;
- stock price performance of PPL Corporation;
- volatility in the fair value of debt and equity securities and its impact on the value of assets in PPL Susquehanna’s nuclear plant decommissioning trust funds and in defined benefit plans, and the potential cash funding requirements if fair value declines;
- interest rates and their effect on pension, retiree medical, and nuclear decommissioning liabilities, and interest payable on certain debt securities;
- volatility in or the impact of other changes in financial or commodity markets and economic conditions;
- profitability and liquidity, including access to capital markets and credit facilities;
- new accounting requirements or new interpretations or applications of existing requirements;



---

## Table of Contents

- changes in securities and credit ratings;
- foreign currency exchange rates;
- current and future environmental conditions, regulations and other requirements and the related costs of compliance, including environmental capital expenditures, emission allowance costs and other expenses;
- legal, regulatory, political, market or other reactions to the 2011 incident at the nuclear generating facility at Fukushima, Japan, including additional Nuclear Regulatory Commission requirements;
- political, regulatory or economic conditions in states, regions or countries where we conduct business;
- receipt of necessary governmental permits, approvals and rate relief;
- new state, federal or foreign legislation, including new tax, environmental, healthcare or pension-related legislation;
- state, federal and foreign regulatory developments;
- the outcome of any rate cases by our regulated utilities;
- the impact of any state, federal or foreign investigations applicable to us and the energy industry;
- the effect of any business or industry restructuring;
- development of new projects, markets and technologies;
- performance of new ventures; and
- business dispositions or acquisitions and our ability to successfully operate such acquired businesses and realize expected benefits from business acquisitions.

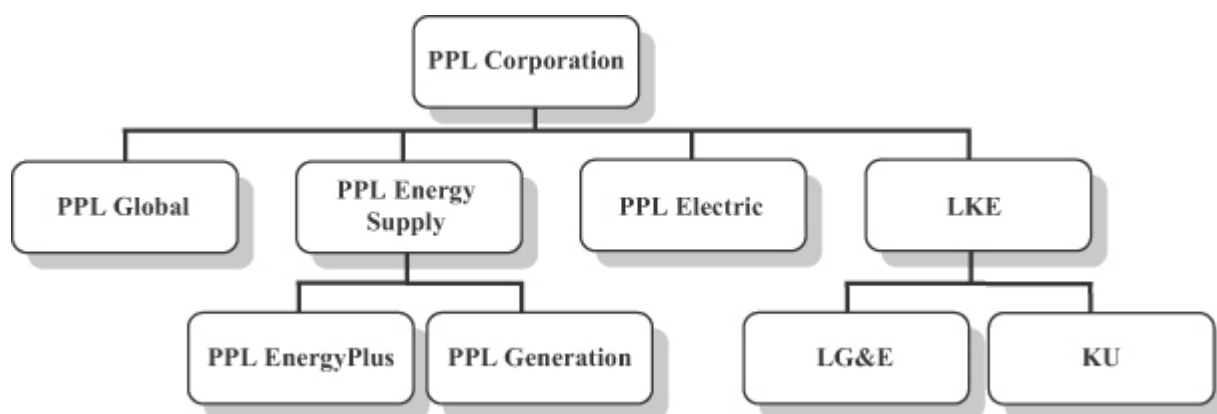
Any such forward-looking statements should be considered in light of such important factors and in conjunction with other documents we file with the SEC.

New factors that could cause actual results to differ materially from those described in forward-looking statements emerge from time to time, and it is not possible for us to predict all such factors, or the extent to which any such factor or combination of factors may cause actual results to differ from those contained in any forward-looking statement. Any forward-looking statement speaks only as of the date on which such statement is made, and, except as required by applicable law, we undertake no obligation to update the information contained in such statement to reflect subsequent developments or information.

[Table of Contents](#)**PPL CORPORATION**

PPL Corporation, incorporated in 1994 and headquartered in Allentown, Pennsylvania, is an energy and utility holding company. Through its subsidiaries, PPL Corporation generates electricity from power plants in the northeastern, northwestern and southeastern United States; markets wholesale or retail energy primarily in the northeastern and northwestern portions of the United States; and delivers electricity to customers in Pennsylvania, Kentucky, Virginia, Tennessee and the United Kingdom, and natural gas to customers in Kentucky.

PPL Corporation's principal subsidiaries are shown below:



PPL Corporation conducts its operations through the following segments:

***Supply***

PPL Corporation, through its indirect, wholly owned subsidiaries, PPL Generation, LLC ("PPL Generation") and PPL EnergyPlus, LLC ("PPL EnergyPlus") owns and operates electricity generating power plants, markets and trades this electricity and other purchased power to competitive wholesale and retail markets and acquires and develops competitive domestic generation projects. Both of these subsidiaries are direct, wholly owned subsidiaries of PPL Energy Supply. See "PPL Energy Supply, LLC" below for more information.

***Pennsylvania Regulated***

PPL Corporation's Pennsylvania Regulated segment includes the regulated electric delivery operations of PPL Electric. As of December 31, 2011, PPL Electric delivered electricity to approximately 1.4 million customers in eastern and central Pennsylvania. See "PPL Electric Utilities Corporation" below for more information.

***Kentucky Regulated***

The Kentucky Regulated segment consists of the operations of LKE, which owns and operates regulated public utilities engaged in the generation, transmission, distribution and sale of electricity and the distribution and sale of natural gas, representing primarily the activities of LG&E and KU. As of December 31, 2011, LG&E provided electric service to approximately 394,000 customers and provided natural gas service to approximately 319,000 customers in Kentucky, and KU delivered electricity to approximately 541,000 customers in Kentucky and Virginia. See "Louisville Gas and Electric Company" and "Kentucky Utilities Company," respectively, for more information.

---

## [Table of Contents](#)

### ***International Regulated***

The International Regulated segment consists primarily of electric distribution operations in the United Kingdom. Through its subsidiaries, as of December 31, 2011, PPL Global delivered electricity to approximately 7.8 million end-users in the United Kingdom. PPL Global is a wholly owned, indirect subsidiary of PPL Corporation.

PPL Corporation's subsidiaries, including PPL Energy Supply, PPL Electric, LKE, LG&E and KU, are separate legal entities and are not liable for the debts of PPL Corporation, and PPL Corporation is not liable for the debts of its subsidiaries (other than under the PPL Guarantees of PPL Capital Funding Debt Securities and PPL Subordinated Guarantees of PPL Capital Funding Subordinated Debt Securities). None of PPL Energy Supply, PPL Electric, LKE, LG&E or KU will guarantee or provide other credit or funding support for the Securities to be offered by PPL Corporation pursuant to this prospectus.

### **PPL CAPITAL FUNDING, INC.**

PPL Capital Funding is a Delaware corporation and a wholly owned subsidiary of PPL Corporation. PPL Capital Funding's primary business is to provide PPL Corporation with financing for its operations. PPL Corporation will fully and unconditionally guarantee the payment of principal, premium and interest on the PPL Capital Funding Debt Securities pursuant to the PPL Guarantees and the PPL Capital Funding Subordinated Debt Securities pursuant to the PPL Subordinated Guarantees, as will be described in supplements to this prospectus.

### **PPL ENERGY SUPPLY, LLC**

PPL Energy Supply, formed in 2000 and headquartered in Allentown, Pennsylvania, is an energy company engaged through its subsidiaries in the generation and marketing of electricity, primarily in the northeastern and northwestern power markets of the United States. PPL Energy Supply's major operating subsidiaries are PPL Generation and PPL EnergyPlus. PPL Energy Supply is an indirect wholly owned subsidiary of PPL Corporation. See "PPL Corporation" above for more information.

### ***PPL Generation and PPL EnergyPlus***

At December 31, 2011, PPL Energy Supply owned or controlled, through its subsidiaries, 10,508 MW of electric power generation capacity and was implementing capital projects at certain of its existing generation facilities in Pennsylvania and Montana to provide 191 MW of additional generating capacity by the end of 2013. Generating capacity controlled by PPL Generation and other PPL Energy Supply subsidiaries includes power obtained through PPL EnergyPlus' tolling or power purchase agreements.

PPL Generation owns and operates a portfolio of competitive domestic power generating assets. Its power plants are located in Pennsylvania and Montana and are fueled by coal, uranium, natural gas, oil and water. The electricity from these plants is sold to PPL EnergyPlus under FERC-jurisdictional power purchase agreements.

PPL EnergyPlus sells electricity produced by PPL Generation subsidiaries, participates in wholesale market load-following auctions, and markets various energy products and commodities such as: capacity, transmission, financial transmission rights, coal, natural gas, oil, uranium, emission allowances, renewable energy credits and other commodities in competitive wholesale and competitive retail markets, primarily in the northeastern and northwestern United States.

PPL EnergyPlus also provides energy-related products and services, such as engineering and mechanical contracting, construction and maintenance services, to commercial and industrial customers.

**Neither PPL Corporation nor any of its subsidiaries or affiliates will guarantee or provide other credit or funding support for the Securities to be offered by PPL Energy Supply pursuant to this prospectus.**

---

**[Table of Contents](#)****PPL ELECTRIC UTILITIES CORPORATION**

PPL Electric, incorporated in 1920 and headquartered in Allentown, Pennsylvania, is a direct subsidiary of PPL Corporation and a regulated public utility. As of December 31, 2011, PPL Electric delivered electricity to approximately 1.4 million customers in eastern and central Pennsylvania. PPL Electric also provides electricity supply as a “provider of last resort,” or “PLR,” to retail customers in that territory that do not choose an alternative electricity provider.

**Neither PPL Corporation nor any of its subsidiaries or affiliates will guarantee or provide other credit or funding support for the Securities to be offered by PPL Electric pursuant to this prospectus.**

**LG&E AND KU ENERGY LLC**

LKE, a holding company formed in 2003, is a wholly owned subsidiary of PPL Corporation. LKE’s regulated utility operations are conducted through its subsidiaries, LG&E and KU, which constitute substantially all of LKE’s assets. LG&E and KU are regulated public utilities engaged in the generation, transmission, distribution and sale of electric energy. LG&E also engages in the distribution and sale of natural gas. LG&E and KU maintain their separate identities and serve customers in Kentucky under their respective names. KU also serves customers in Virginia under the Old Dominion Power name and customers in Tennessee under the KU name.

See “Louisville Gas and Electric Company” and “Kentucky Utilities Company” below for additional information about LG&E and KU.

**Neither PPL Corporation nor any of its subsidiaries or affiliates will guarantee or provide other credit or funding support for the Securities to be offered by LKE pursuant to this prospectus.**

**LOUISVILLE GAS AND ELECTRIC COMPANY**

LG&E, headquartered in Louisville, Kentucky and incorporated in Kentucky in 1913, is a regulated utility engaged in the generation, transmission, distribution and sale of electricity and the distribution and sale of natural gas in Kentucky. At December 31, 2011, LG&E owned or controlled 3,352 MW of electric power generation capacity. Subject to certain regulatory approvals, LG&E is planning capital projects at certain of its existing generation facilities to provide 483 MW of additional generating capacity by 2016. LG&E also anticipates retiring 563 MW of generating capacity by the end of 2015 to meet certain environmental regulations. As of December 31, 2011, LG&E provided electric service to approximately 394,000 customers in Louisville and adjacent areas in Kentucky, covering approximately 700 square miles in nine counties. As of December 31, 2011, LG&E provided natural gas service to approximately 319,000 customers in its electric service area and seven additional counties in Kentucky.

**Neither PPL Corporation nor any of its subsidiaries or affiliates will guarantee or provide other credit or funding support for the Securities to be offered by LG&E pursuant to this prospectus.**

**KENTUCKY UTILITIES COMPANY**

KU, headquartered in Lexington, Kentucky and incorporated in Kentucky in 1912 and Virginia in 1991, is a regulated utility engaged in the generation, transmission, distribution and sale of electricity in Kentucky, Virginia and Tennessee. At December 31, 2011, KU owned or controlled 4,833 MW of electric power generation capacity. Subject to certain regulatory approvals, KU is planning capital projects at certain of its existing generation facilities to provide 652 MW of additional generating capacity by 2016. KU also anticipates retiring

---

## Table of Contents

234 MW of generating capacity by the end of 2015 to meet certain environmental regulations. As of December 31, 2011, KU provided electric service to approximately 512,000 customers in 77 counties in central, southeastern and western Kentucky and approximately 29,000 customers in five counties in southwestern Virginia. As of December 31, 2011, KU's service area covered approximately 4,800 non-contiguous square miles. KU also sells wholesale electric energy to 12 municipalities in Kentucky. In Virginia, KU operates under the name Old Dominion Power Company.

**Neither PPL Corporation nor any of its subsidiaries or affiliates will guarantee or provide other credit or funding support for the Securities to be offered by KU pursuant to this prospectus.**

---

The offices of PPL Corporation, PPL Capital Funding, PPL Energy Supply and PPL Electric are located at Two North Ninth Street, Allentown, Pennsylvania 18101-1179 (Telephone number (610) 774-5151).

The offices of LKE and LG&E are located at 220 West Main Street, Louisville, Kentucky 40202 (Telephone number (502) 627-2000).

The offices of Kentucky Utilities Company are located at One Quality Street, Lexington, Kentucky 40507 (Telephone number (502) 627-2000).

---

***The information above concerning PPL Corporation, PPL Capital Funding, PPL Energy Supply, PPL Electric, LKE, LG&E and KU and, if applicable, their respective subsidiaries is only a summary and does not purport to be comprehensive. For additional information about these companies, including certain assumptions, risks and uncertainties involved in the forward-looking statements contained or incorporated by reference in this prospectus, you should refer to the information described in "Where You Can Find More Information."***

## **USE OF PROCEEDS**

Except as otherwise described in a prospectus supplement, the net proceeds from the sale of the PPL Capital Funding Debt Securities and the PPL Capital Funding Subordinated Debt Securities will be loaned to PPL Corporation and/or its subsidiaries, and PPL Corporation and/or its subsidiaries are expected to use the proceeds of such loans, and the proceeds of the other Securities issued by PPL Corporation, for general corporate purposes, including repayment of debt. Except as otherwise described in a prospectus supplement, each of PPL Energy Supply, PPL Electric, LKE, LG&E and KU is expected to use the proceeds of the Securities it issues for general corporate purposes, including repayment of debt, and for capital expenditures related to construction costs.

[Table of Contents](#)**RATIOS OF EARNINGS TO FIXED CHARGES AND EARNINGS TO COMBINED FIXED CHARGES AND PREFERRED STOCK DIVIDENDS****PPL Corporation**

The following table sets forth PPL Corporation's ratio of earnings to fixed charges and ratio of earnings to combined fixed charges and preferred stock dividends for the periods indicated:

	Twelve Months Ended December 31,				
	<u>2011</u>	<u>2010</u>	<u>2009</u>	<u>2008</u>	<u>2007</u>
Ratio of earnings to fixed charges and ratio of earnings to combined fixed charges and preferred stock dividends (a)	3.1	2.7	1.9	3.1	2.8

- (a) See PPL Corporation's reports on file with the SEC pursuant to the Securities Exchange Act of 1934, as amended (the "Exchange Act"), as described under "Where You Can Find More Information" for more information. PPL Corporation had no preferred securities outstanding during the periods indicated; therefore, the ratio of earnings to combined fixed charges and preferred stock dividends is the same as the ratio of earnings to fixed charges.

**PPL Energy Supply**

The following table sets forth PPL Energy Supply's ratio of earnings to fixed charges and ratio of earnings to combined fixed charges and preferred securities dividends for the periods indicated:

	Twelve Months Ended December 31,				
	<u>2011</u>	<u>2010</u>	<u>2009</u>	<u>2008</u>	<u>2007</u>
Ratio of earnings to fixed charges and ratio of earnings to combined fixed charges and preferred securities dividends (a)	5.5	2.7	0.6(b)	2.2	2.3

- (a) See PPL Energy Supply's reports on file with the SEC pursuant to the Exchange Act as described under "Where You Can Find More Information" for more information. PPL Energy Supply had no preferred securities outstanding during the periods indicated; therefore, the ratio of earnings to combined fixed charges and preferred securities dividends is the same as the ratio of earnings to fixed charges.
- (b) Upon reflecting the reclassification of PPL Global's operating results as Discontinued Operations, earnings were less than fixed charges for this period. See PPL Energy Supply's reports on file with the SEC pursuant to the Exchange Act for additional information. The total amount of fixed charges for this period was approximately \$364 million and the total amount of earnings was approximately \$206 million. The amount of the deficiency, or the amount of fixed charges in excess of earnings, was approximately \$158 million.

**PPL Electric**

The following table sets forth PPL Electric's ratio of earnings to fixed charges and ratio of earnings to combined fixed charges and preferred stock dividends for the periods indicated:

	Twelve Months Ended December 31,				
	<u>2011</u>	<u>2010</u>	<u>2009</u>	<u>2008</u>	<u>2007</u>
Ratio of earnings to fixed charges (a)	3.4	2.9	2.8	3.4	2.7
Ratio of earnings to combined fixed charges and preferred stock dividends (a)	2.9	2.4	2.3	2.8	2.3

- (a) See PPL Electric's reports on file with the SEC pursuant to the Exchange Act as described under "Where You Can Find More Information" for more information.

[Table of Contents](#)**LKE**

The following table sets forth LKE's ratio of earnings to fixed charges and ratio of earnings to combined fixed charges for the periods indicated. The following table includes the periods before and after PPL Corporation's acquisition of LKE on November 1, 2010, and is labeled as Predecessor or Successor.

	Successor		Predecessor			
	12 Months Ended Dec. 31, 2011	2 Months Ended Dec. 31, 2010	10 Months Ended Oct. 31, 2010	Twelve Months Ended Dec. 31		
				2009	2008	2007
Ratio of earnings to fixed charges (a)	3.7	3.9	2.7	2.3	2.5	2.9

- (a) See LKE's reports on file with the SEC pursuant to the Exchange Act as described under "Where You Can Find More Information" for more information.

**LG&E**

The following table sets forth LG&E's ratio of earnings to fixed charges and ratio of earnings to combined fixed charges for the periods indicated. The following table includes the periods before and after PPL Corporation's acquisition of LKE, LG&E's parent, on November 1, 2010, and is labeled as Predecessor or Successor.

	Successor		Predecessor			
	12 Months Ended Dec. 31, 2011	2 Months Ended Dec. 31, 2010	10 Months Ended Oct. 31, 2010	Twelve Months Ended Dec. 31		
				2009	2008	2007
Ratio of earnings to fixed charges (a)	5.2	4.8	4.7	3.7	3.8	4.4

- (a) See LG&E's reports on file with the SEC pursuant to the Exchange Act as described under "Where You Can Find More Information" for more information.

**KU**

The following table sets forth KU's ratio of earnings to fixed charges and ratio of earnings to combined fixed charges for the periods indicated. The following table includes the periods before and after PPL Corporation's acquisition of LKE, KU's parent, on November 1, 2010, and is labeled as Predecessor or Successor.

	Successor		Predecessor			
	12 Months Ended Dec. 31, 2011	2 Months Ended Dec. 31, 2010	10 Months Ended Oct. 31, 2010	Twelve Months Ended Dec. 31		
				2009	2008	2007
Ratio of earnings to fixed charges (a)	4.8	6.0	4.0	3.7	3.9	5.1

- (a) See KU's reports on file with the SEC pursuant to the Exchange Act as described under "Where You Can Find More Information" for more information.

[Table of Contents](#)**WHERE YOU CAN FIND MORE INFORMATION****Available Information**

PPL Corporation, PPL Energy Supply, PPL Electric, LKE, LG&E and KU each file reports and other information with the SEC. You may obtain copies of this information by mail from the Public Reference Room of the SEC, 100 F Street, N.E., Room 1580, Washington, D.C. 20549, at prescribed rates. Further information on the operation of the SEC's Public Reference Room in Washington, D.C. can be obtained by calling the SEC at 1-800-SEC-0330.

PPL Corporation's Internet Web site is [www.pplweb.com](http://www.pplweb.com). On the Investor Center page of that Web site PPL Corporation provides access to all SEC filings of PPL Corporation, PPL Energy Supply, PPL Electric, LKE, LG&E and KU free of charge, as soon as reasonably practicable after filing with the SEC. The information at PPL Corporation's Internet Web site is not incorporated in this prospectus by reference, and you should not consider it a part of this prospectus. Additionally, PPL Corporation's, PPL Energy Supply's, PPL Electric's, LKE's, LG&E's and KU's filings are available at the SEC's Internet Web site ([www.sec.gov](http://www.sec.gov)).

In addition, reports, proxy statements and other information concerning PPL Corporation, PPL Energy Supply and PPL Electric can be inspected at their offices at Two North Ninth Street, Allentown, Pennsylvania 18101-1179; reports and other information concerning LKE and LG&E can be inspected at their offices at 220 West Main Street, Louisville, Kentucky 40202, and reports and other information concerning KU can be inspected at its office at One Quality Street, Lexington, Kentucky 40507.

**Incorporation by Reference**

Each of PPL Corporation, PPL Energy Supply, PPL Electric, LKE, LG&E and KU will "incorporate by reference" information into this prospectus by disclosing important information to you by referring you to another document that it files separately with the SEC. The information incorporated by reference is deemed to be part of this prospectus, and later information that we file with the SEC will automatically update and supersede that information. This prospectus incorporates by reference the documents set forth below that have been previously filed with the SEC. These documents contain important information about the registrants.

**PPL Corporation**

<u>SEC Filings (File No. 1-11459)</u>	<u>Period/Date</u>
Annual Report on Form 10-K	Year ended December 31, 2011
PPL Corporation's 2011 Notice of Annual Meeting and Proxy Statement	Filed on April 6, 2011
Current Reports on Form 8-K	Filed on January 18, 2012, January 31, 2012, February 1, 2012, February 27, 2012, February 29, 2012, March 27, 2012 and March 28, 2012
PPL Corporation's Registration Statement on Form 8-B	Filed on April 27, 1995

**PPL Energy Supply**

<u>SEC Filings (File No. 1-32944)</u>	<u>Period/Date</u>
Annual Report on Form 10-K	Year ended December 31, 2011
Current Reports on Form 8-K	Filed on February 27, 2012 and February 29, 2012



**Table of Contents****PPL Electric**SEC Filings (File No. 1-905)

Annual Report on Form 10-K

Current Reports on Form 8-K

Period/Date

Year ended December 31, 2011

Filed on February 29, 2012

**LKE**SEC Filings (File No. 333-173665)

Annual Report on Form 10-K

Period/Date

Year ended December 31, 2011

**LG&E**SEC Filings (File No. 1-2893)

Annual Report on Form 10-K

Period/Date

Year ended December 31, 2011

**KU**SEC Filings (File No. 1-3464)

Annual Report on Form 10-K

Period/Date

Year ended December 31, 2011

Additional documents that PPL Corporation, PPL Energy Supply, PPL Electric, LKE, LG&E and KU file with the SEC pursuant to Sections 13(a), 13(c), 14 or 15(d) of the Exchange Act, between the date of this prospectus and the termination of the offering of the Securities are also incorporated herein by reference. In addition, any additional documents that PPL Corporation, PPL Energy Supply, PPL Electric, LKE, LG&E or KU file with the SEC pursuant to these sections of the Exchange Act after the date of the filing of the registration statement containing this prospectus, and prior to the effectiveness of the registration statement are also incorporated herein by reference. Unless specifically stated to the contrary, none of the information that PPL Corporation, PPL Energy Supply, PPL Electric, LKE, LG&E or KU files or discloses under Items 2.02 or 7.01 of any Current Report on Form 8-K that have been furnished or may from time to time be furnished with the SEC is or will be incorporated by reference into, or otherwise included in, this prospectus.

Each of PPL Corporation, PPL Energy Supply, PPL Electric, LKE, LG&E and KU will provide without charge to each person, including any beneficial owner, to whom a copy of this prospectus has been delivered, a copy of any and all of its filings with the SEC. You may request a copy of these filings by writing or telephoning the appropriate registrant at:

*For PPL Corporation, PPL Energy Supply and PPL Electric:*

Two North Ninth Street  
Allentown, Pennsylvania 18101-1179  
Attention: Treasurer  
Telephone: 1-800-345-3085

*For LKE and LG&E:*

220 West Main Street  
Louisville, Kentucky 40202  
Attention: Treasurer  
Telephone: 1-800-345-3085

---

**Table of Contents**

*For KU:*  
One Quality Street  
Lexington, Kentucky 40507  
Attention: Treasurer  
Telephone: 1-800-345-3085

No separate financial statements of PPL Capital Funding are included herein or incorporated herein by reference. PPL Corporation and PPL Capital Funding do not consider those financial statements to be material to holders of the PPL Capital Funding Debt Securities or PPL Capital Funding Subordinated Debt Securities because (1) PPL Capital Funding is a wholly owned subsidiary that was formed for the primary purpose of providing financing for PPL Corporation and its subsidiaries, (2) PPL Capital Funding does not currently engage in any independent operations and (3) PPL Capital Funding does not currently plan to engage, in the future, in more than minimal independent operations. See “PPL Capital Funding.” PPL Capital Funding has received a “no action” letter from the Staff of the SEC stating that the Staff would not raise any objection if PPL Capital Funding does not file periodic reports under Sections 13 and 15(d) of the Exchange Act. Accordingly, PPL Corporation and PPL Capital Funding do not expect PPL Capital Funding to file those reports.

**EXPERTS**

The consolidated financial statements of PPL Corporation, PPL Energy Supply, LLC and PPL Electric Utilities Corporation appearing in such companies’ Annual Reports (Form 10-K) for the year ended December 31, 2011 including schedules appearing therein, and the effectiveness of PPL Corporation’s internal control over financial reporting as of December 31, 2011, have been audited by Ernst & Young LLP, independent registered public accounting firm, as set forth in its reports thereon included therein, and incorporated herein by reference which, as to the year 2010, are based in part on the report of PricewaterhouseCoopers LLP, independent registered public accounting firm. Such consolidated financial statements are incorporated herein by reference in reliance upon such reports given on the authority of such firm as experts in accounting and auditing.

The audited historical financial statements of Central Networks (collectively Central Networks East plc, Central Networks Limited and certain other related assets and liabilities) included in PPL Corporation’s Current Report on Form 8-K dated March 27, 2012 have been incorporated herein by reference in reliance on the report of PricewaterhouseCoopers LLP, independent accountants, given on the authority of said firm as experts in auditing and accounting.

The consolidated financial statements of LG&E and KU Energy LLC and the financial statements of Louisville Gas and Electric Company and Kentucky Utilities Company appearing in such companies’ Annual Reports (Form 10-K) for the year ended December 31, 2011 including schedules appearing therein have been audited by Ernst & Young LLP, independent registered public accounting firm, as set forth in its reports included therein, and incorporated herein by reference. Such financial statements are incorporated herein by reference in reliance upon such reports given on the authority of such firm as experts in accounting and auditing. The consolidated financial statements of LG&E and KU Energy LLC and the financial statements of Louisville Gas and Electric Company and Kentucky Utilities Company as of December 31, 2010 and for the periods from January 1, 2010 to October 31, 2010, and November 1, 2010 to December 1, 2010, and for the year ended December 31, 2009 incorporated herein by reference have been so incorporated in reliance on the reports of PricewaterhouseCoopers LLP, independent registered public accounting firm, given on the authority of said firm as experts in auditing and accounting.

---

[Table of Contents](#)**VALIDITY OF THE SECURITIES AND THE PPL GUARANTEES**

Dewey & LeBoeuf LLP, New York, New York or Simpson Thacher & Bartlett LLP, New York, New York and Frederick C. Paine, Esq., Senior Counsel of PPL Services Corporation will pass upon the validity of the Securities, the PPL Guarantees and the PPL Subordinated Guarantees for PPL Corporation, PPL Capital Funding, PPL Energy Supply and PPL Electric. Dewey & LeBoeuf LLP and John P. Fendig, Esq. of LG&E and KU Energy LLC will pass upon the validity of any LKE, LG&E and KU Securities for those issuers. Sullivan & Cromwell LLP, New York, New York or Davis Polk & Wardwell LLP, New York, New York will pass upon the validity of the Securities, the PPL Guarantees and the PPL Subordinated Guarantees for any underwriters or agents. Dewey & LeBoeuf LLP, Simpson Thacher & Bartlett LLP, Sullivan & Cromwell LLP and Davis Polk & Wardwell LLP will rely on the opinion of Mr. Paine as to matters involving the law of the Commonwealth of Pennsylvania and on the opinion of Mr. Fendig as to matters involving the laws of the Commonwealths of Kentucky and Virginia and the State of Tennessee.

---

[Table of Contents](#)

